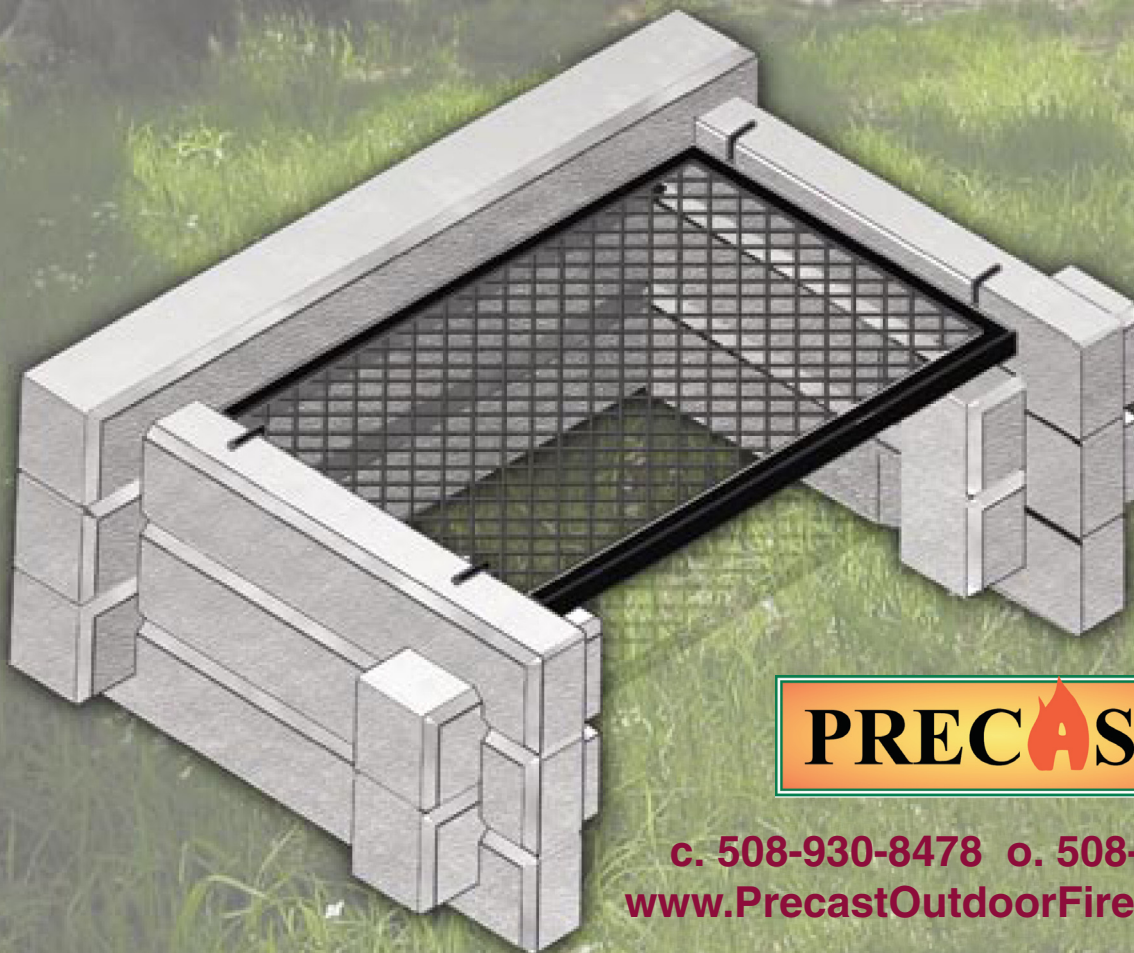


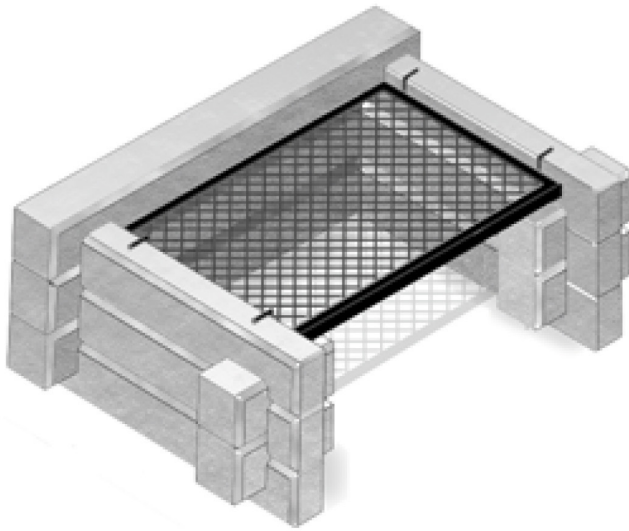
# Commercial 3 Logger

Commercial grade for the campground owner  
High compression (3700 psi)  
Smooth look, clean edges



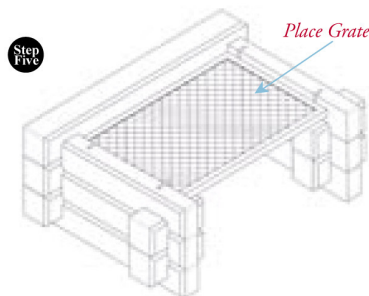
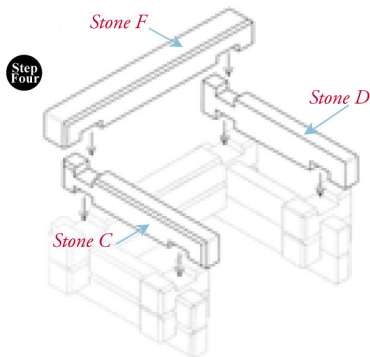
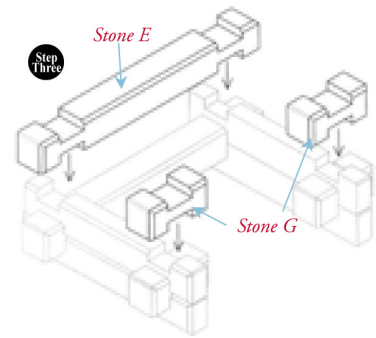
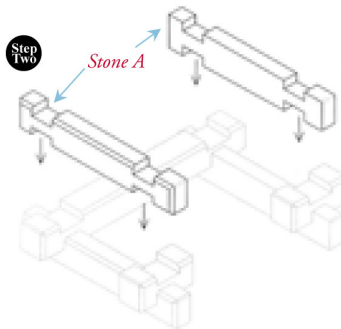
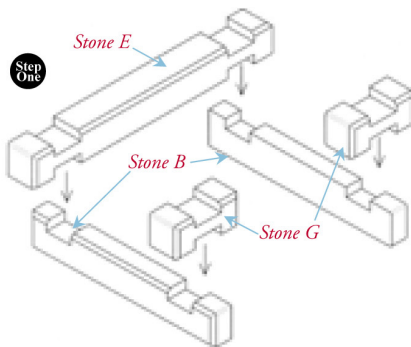
**PRECAST**

c. 508-930-8478 o. 508-378-7742  
[www.PrecastOutdoorFireplaces.com](http://www.PrecastOutdoorFireplaces.com)

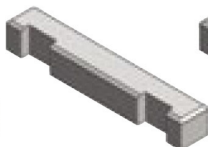


## Commercial 3 Logger Packaging

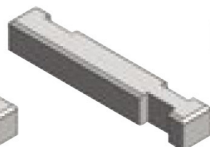
- 6 finished grills per pallet
- Finished Dimensions:  
42" W x 31" D x 18.5" H
- Finished unit weight: 234 lbs.
- Total pallet weight: 1,444 lbs.



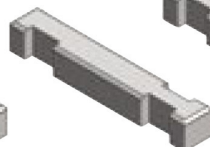
**Stone A**  
L (31") x W (4.5") x H (5")



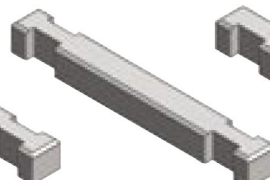
**Stone B**  
L (31") x W (4.5") x H (5")



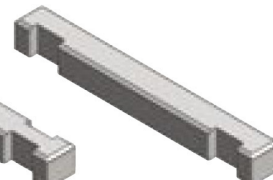
**Stone C**  
L (31") x W (4.5") x H (5")



**Stone D**  
L (31") x W (4.5") x H (5")



**Stone E**  
L (42") x W (4.5") x H (5")



**Stone F**  
L (42") x W (4.5") x H (5")



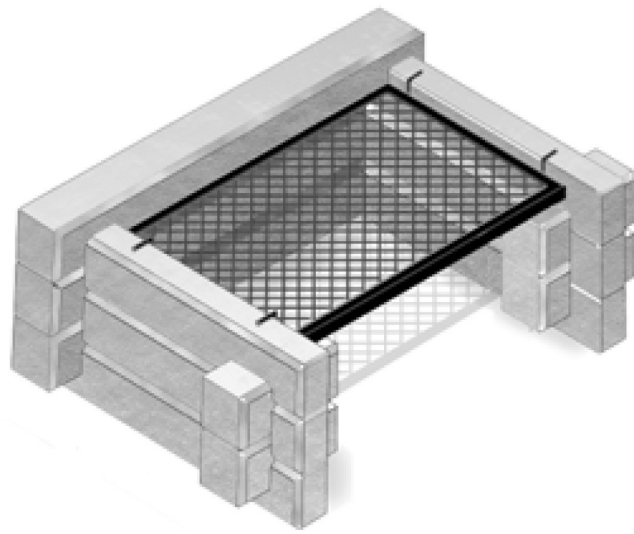
**Stone G**  
L (10.5") x W (4.5") x H (5")

The "Commercial 3 Logger" retails for **\$359.00** per unit

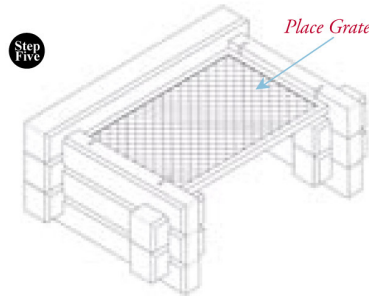
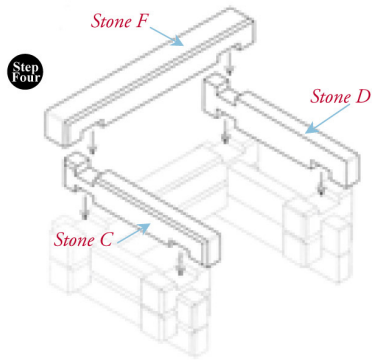
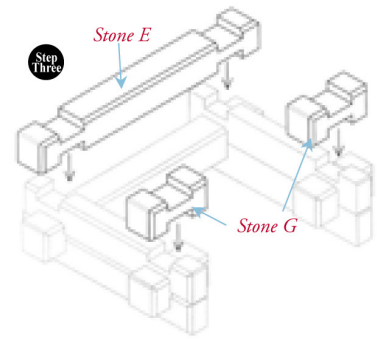
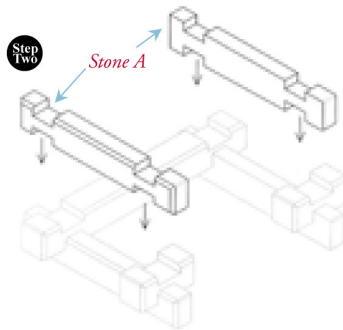
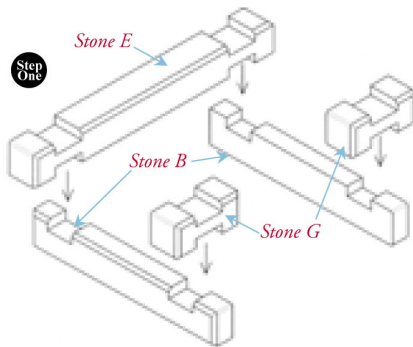
Wholesale pricing: **\$216.30** with grill or **\$176.30** without grill

Free freight up to **\$100.00** credit per pallet with purchase of 6 units on a pallet





# Commercial 3 Logger \$359.00



Available Color:



Granite Blend



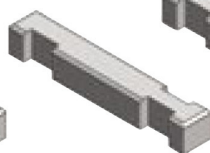
**Stone A**  
L (31") x W (4.5") x H (5")



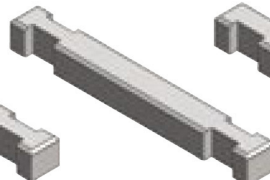
**Stone B**  
L (31") x W (4.5") x H (5")



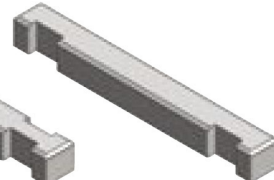
**Stone C**  
L (31") x W (4.5") x H (5")



**Stone D**  
L (31") x W (4.5") x H (5")



**Stone E**  
L (42") x W (4.5") x H (5")



**Stone F**  
L (42") x W (4.5") x H (5")



**Stone G**  
L (10.5") x W (4.5") x H (5")